



Competence Centre for Research Data at the University of Cologne

C. Curdt², J. Dierkes³, R. Depping³, S. Kloppenburg¹, M. Riese¹, M. Röder¹, V. Winkelmann², C. Arntz¹, U. Lang², H. Neuhausen³

What Are Research Data And What Does RDM Mean?

- “**Research data are data** that arise in the course of a scientific project, e.g. research on primary sources, experiments, measurements, surveys or interviews.” (DFG 2009)
- **Research data accumulate** in many different ways in every scientific discipline. Among them are: observations, experiments, simulations, code, references.
- **Research data management (RDM)** means the handling of this data over the entire life cycle of the research data. This ranges from the collection, evaluation, (further) processing to archiving, publication and subsequent use of research data.

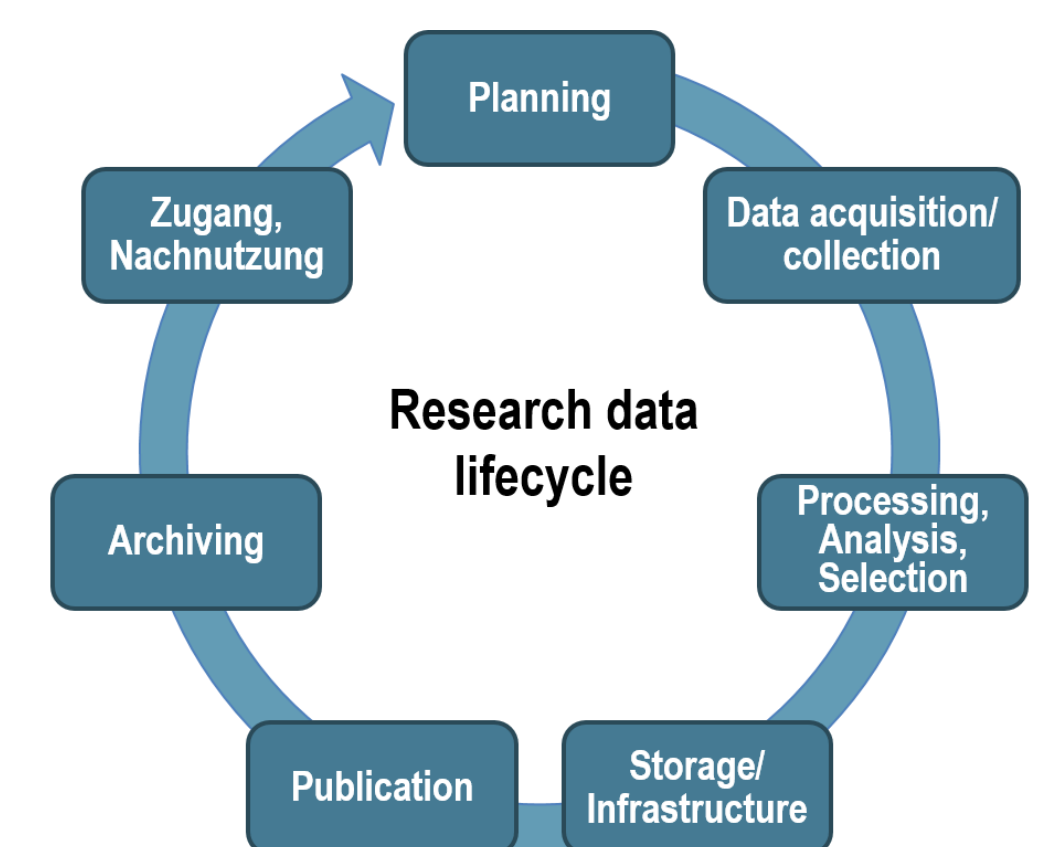


Fig 1. Research Data Lifecycle

Who Should Do RDM?

- Especially in the area of externally funded research, researchers are increasingly being required to systematically manage their data.
- Many funding organizations (e.g. DFG, BMBF, European Commission) require a so-called **Data Management Plan (DMP)** when applying for funding. This plan regulates how research data collected in the project must be handled throughout the entire life cycle of research projects.
- Independent **publication of research data** or the provision of data as a journal supplement increases your reputation and serves the transparency of your research process.
- The UoC issued a **Research Data Policy** for all researchers on the campus in Feb 2018.

https://am.uni-koeln.de/e21463/am_mitteilungen/@6/AM_2018-07_Leitlinie-zum-Umgang-mit-Forschungsdaten.pdf

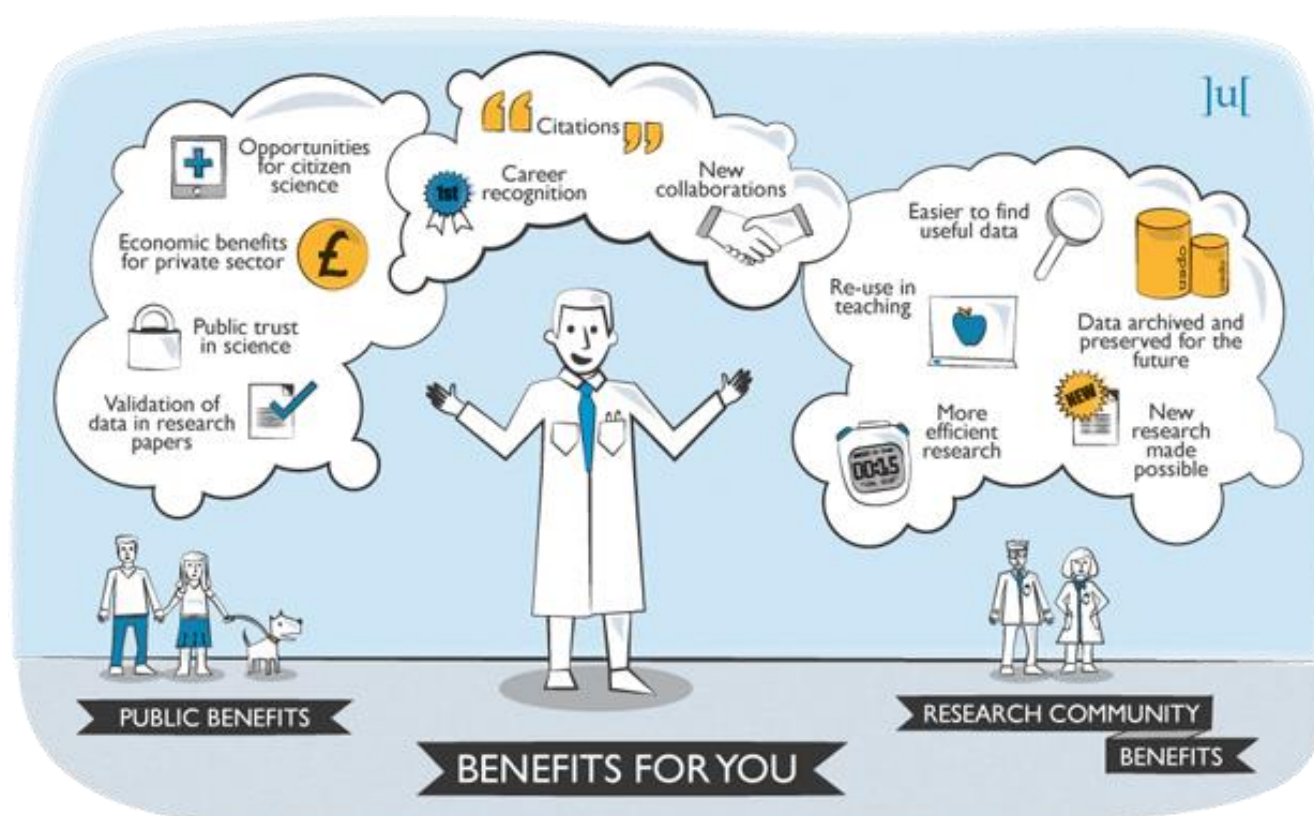


Fig 2. Benefits for Researchers

The Competence Centre for Research Data

- The Centre will be **further developed** by the University and City Library of Cologne (USB), the Regional Computing Centre (RRZK) and Department 7 Research Management in a three-year project starting in mid 2018.
- It will offer you **comprehensive support and advice in all phases of your research project**: from the development of a data management plan (DMP) in the project proposal phase to finding an appropriate repository or technical storage options and publication channels for your research data.
- Our **network** closely cooperates with all institutions and experts in the UoC's Faculties.

Our Services Will Include

- Workshops on research data management
- Advice and support in
 - preparing data management plans (DMPs) for research proposals
 - developing a data strategy
 - storing and archiving research data
 - using collaborative work environments
 - publishing research data

Contact

For further information and helpful links on the topic of research data management, please see our website. Contact our team for a personal consultation.

fdm-support@uni-koeln.de
fdm.uni-koeln.de

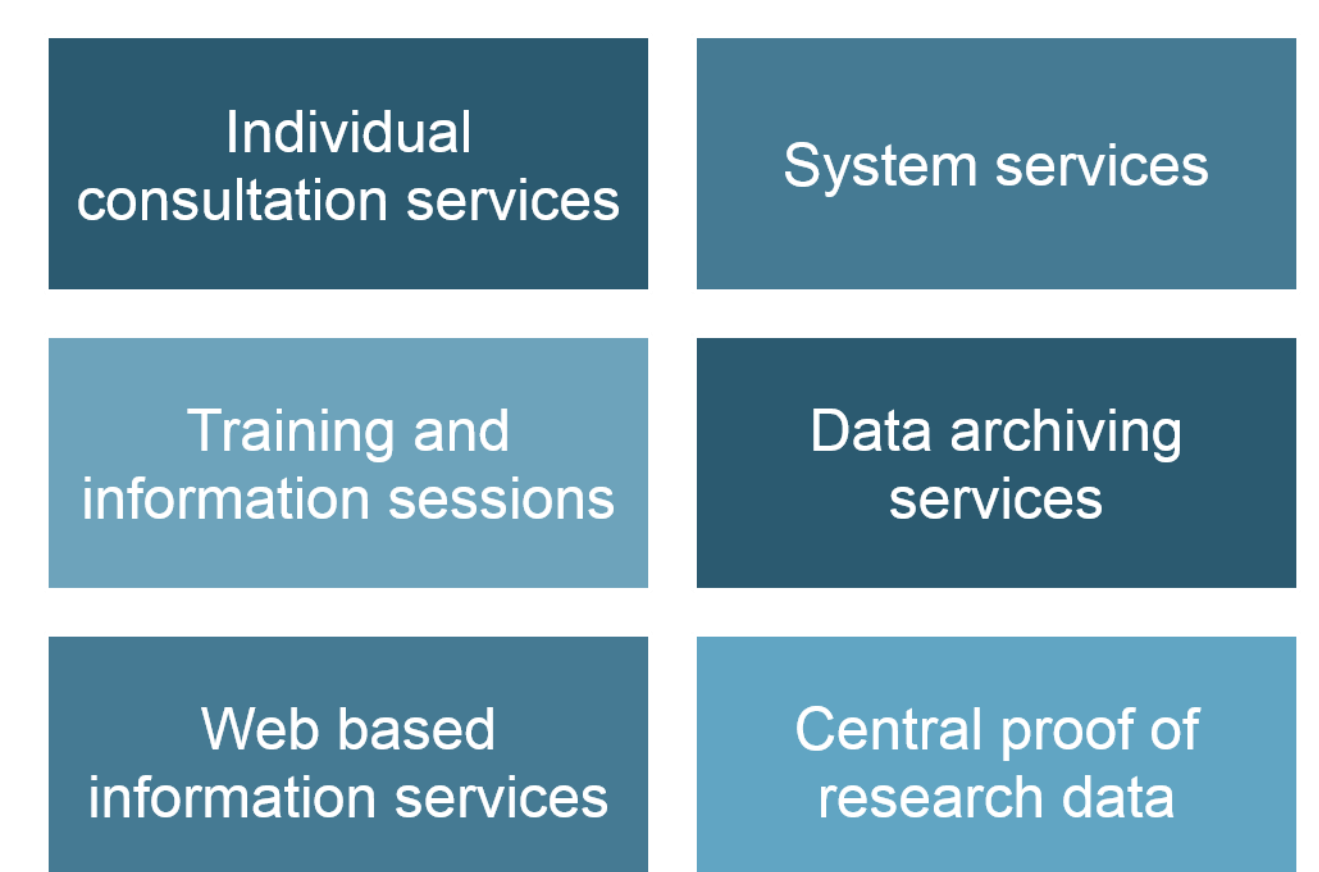
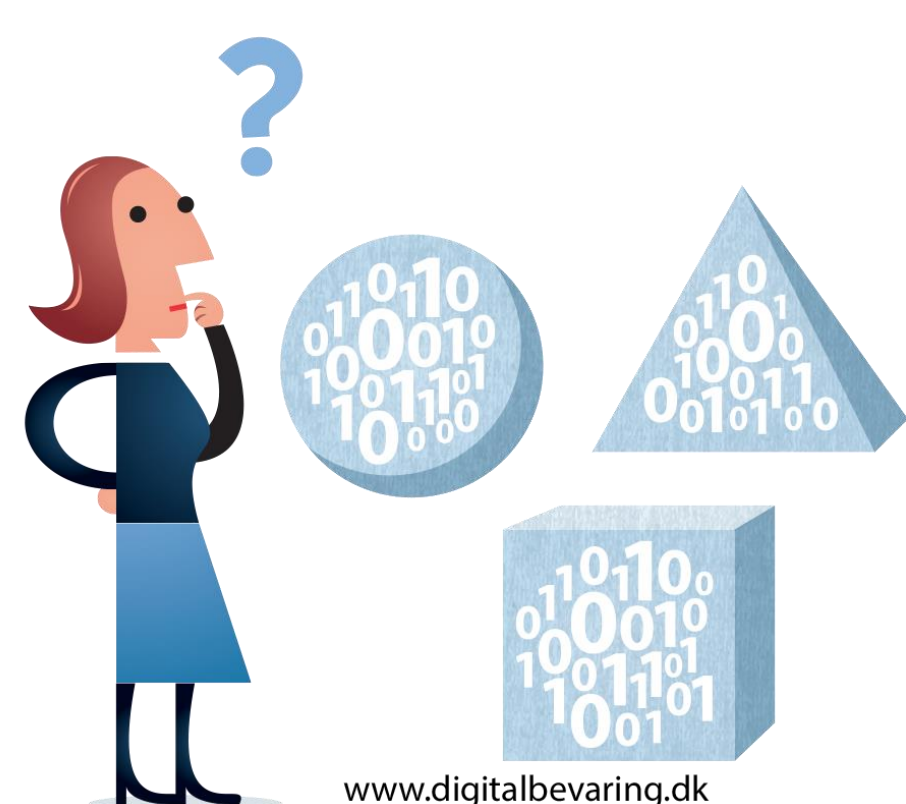


Fig 3. Proposed RDM Services

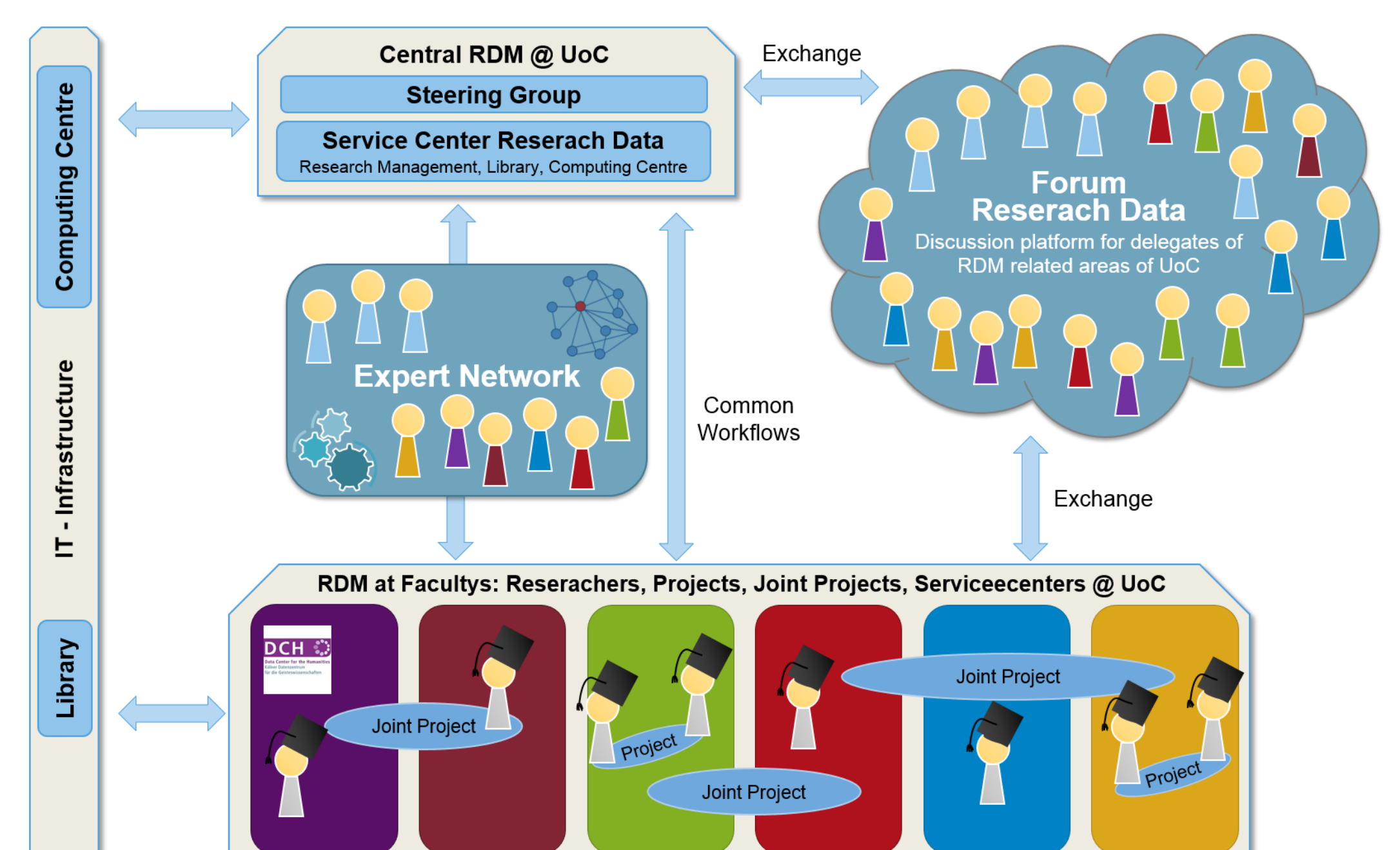


Fig 4. Proposed RDM structure at UoC